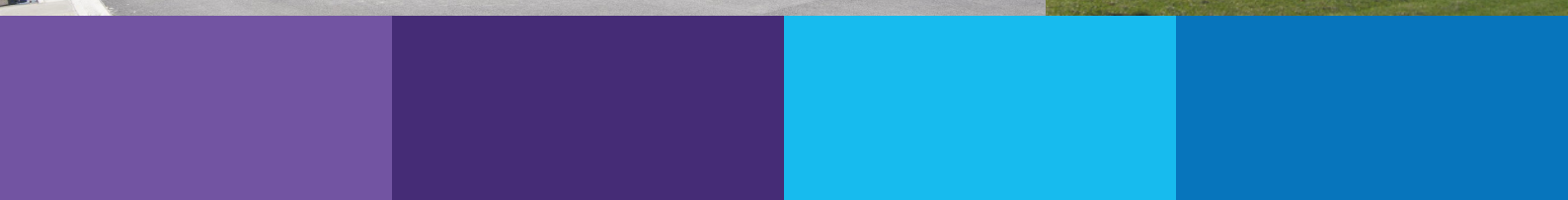
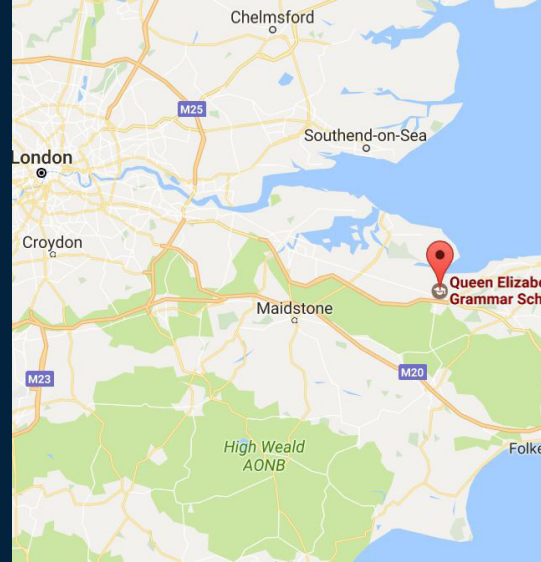


Queen Elizabeth's Grammar School

Faversham, Kent

www.queenelizabeths.kent.sch.uk



Location Features

Faversham is a mid-sized market town in Kent. It is approximately 50 miles from London and 10 miles from Canterbury. It is an historic town, with records stretching back to pre-Roman times. In the Middle Ages the town became an important centre for brewing, and the Shepard Neame Brewery, founded in 1698, remains a major employer in the town to this day. Nowadays the town offers residents and visitors a pleasant and typical British experience, away from the cosmopolitan feel of larger cities in the United Kingdom.

Academic Facilities and Services


Recently renovated classrooms; Interactive whiteboards; Food technology room; Well-equipped ICT rooms; Specialist language school status; Well-stocked library and careers library

Sports, Arts and Leisure facilities

State-of-the-art purpose-built sports hall; Expansive playing fields; Tennis courts; Access to local sports facilities including swimming pool; Performing arts studio

Subjects Offered


Art, Craft & Design; Biology; Chemistry; Computer Science; Drama; Economics; English Language; English Literature; French; Geography; History; Mathematics; Mathematics (Further); Media Studies; Physical Education; Physics; Psychology; Sociology; Spanish; Technology - Resistant Materials; Technology - Graphic Products

 Nearest Airport
London City (LCY)
or Gatwick (LGW)

 Age Range
Ages from 11 -
18 years old

 Genders
Males and
Females

 Student
Numbers
850 Day /
0 Boarders

 Uniform
Requirements
11-16: compulsory
Sixth Form: none

 % International
Students
Less than 5%
International
Students

 Eligible
Nationalities
European Union
/ EEA / Swiss

 ESL Provision
Available at
extra cost

 Senior Course
of Study
A Levels

 Specialisms/
Strengths
Rated
'Outstanding'
by Ofsted